

THE ISSUES PROJECT: AN EXAMPLE OF KNOWLEDGE BROKERING AT THE RESEARCH PROGRAMME LEVEL

Katarzyna Przybycień
Heriot Watt University

Innovation through Knowledge Transfer 2010,
7-8 December 2010, Coventry, UK



PRESENTATION PLAN



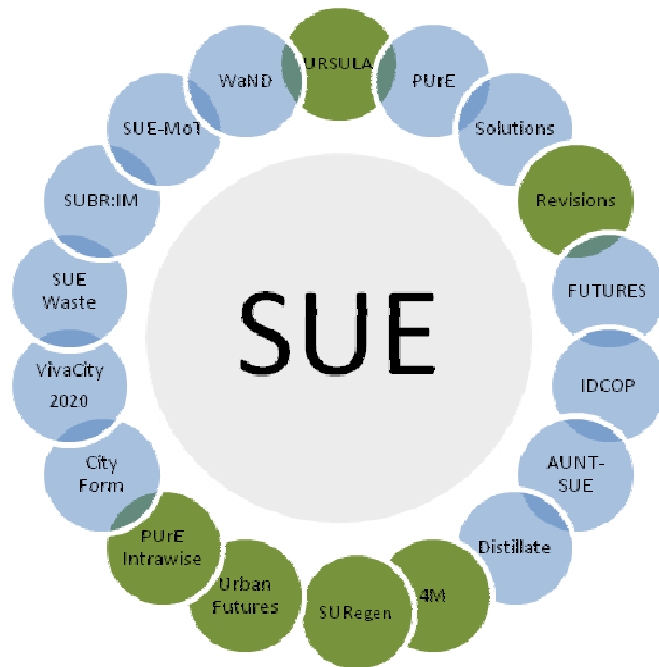
- ISSUES AND SUE
- KNOWLEDGE BROKERS AND BROKERING
- ISSUES PROJECT: PROGRAMME LEVEL BROKERING
- EMERGING MODELS OF KNOWLEDGE BROKERING
- BENEFITS AND CHALLENGES TO ‘MANY-TO-MANY’
KNOWLEDGE BROKERING

INTRODUCTION



EPSRC

Engineering and Physical Sciences
Research Council



SUSTAINABLE URBAN ENVIRONMENTS PROGRAMME

18 Research Consortia
£38 Million Research
400 Researchers from 30 different UK Universities

IMPLEMENTATION STRATEGIES FOR SUSTAINABLE URBAN ENVIRONMENT SYSTEMS PROJECT

9 staff from two Universities



The ISSUES Project **THE ISSUES PROJECT**

2003 2004 2005 2006 2007 2008 2009 2010 2011 2012

SUE 1

Waste Water and Land Management WAND SUE WASTE SUBR:IM	Metrics, Knowledge Management and Decision Making Cluster PURE SUEMOT
Urban and Built Environment Cluster CITY FORM IDCOP VIVACITY	Transport Cluster AUNT SUE DISTILLATE FUTURES SOLUTIONS

SUE 2

4M	SUREGEN
PURE INTRAWISE	URBAN FUTURES
REVISIONS	URSULA

SUE 3
(Consortia yet to be confirmed)



KNOWLEDGE BROKER:

“intermediaries [...] who link the producers and users of knowledge to strengthen the generation, dissemination and eventual use of [...] knowledge”
(Bielak et al. 2008).

KNOWLEDGE BROKERING:

“...processes used by intermediaries in mediating between sources of knowledge and users of knowledge”
(Bielak et al. 2008).

ROLES OF KNOWLEDGE BROKERS



KNOWLEDGE MANAGERS



LINKING AGENTS



CAPACITY BUILDERS

(Meyer, 2010)



RESEARCH AND KNOWLEDGE CATEGORISATION

- Knowledge of SUE research
- Knowledge of End-user audiences
- Knowledge of the mechanisms of Knowledge Transfer

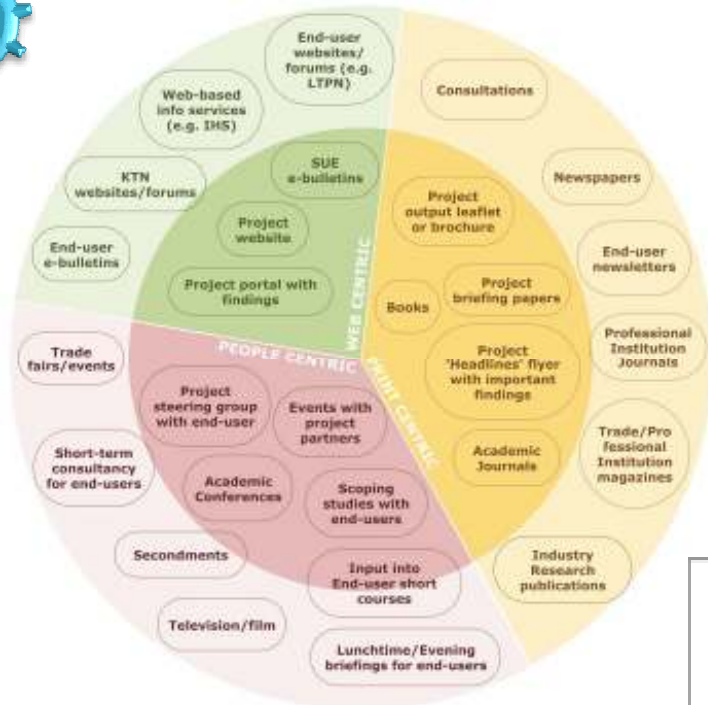
TRANSLATION OF KNOWLEDGE

- Jargon-free Communication
- Modern Communication tools
- Easy Access and Formats of Information

DISSEMINATION

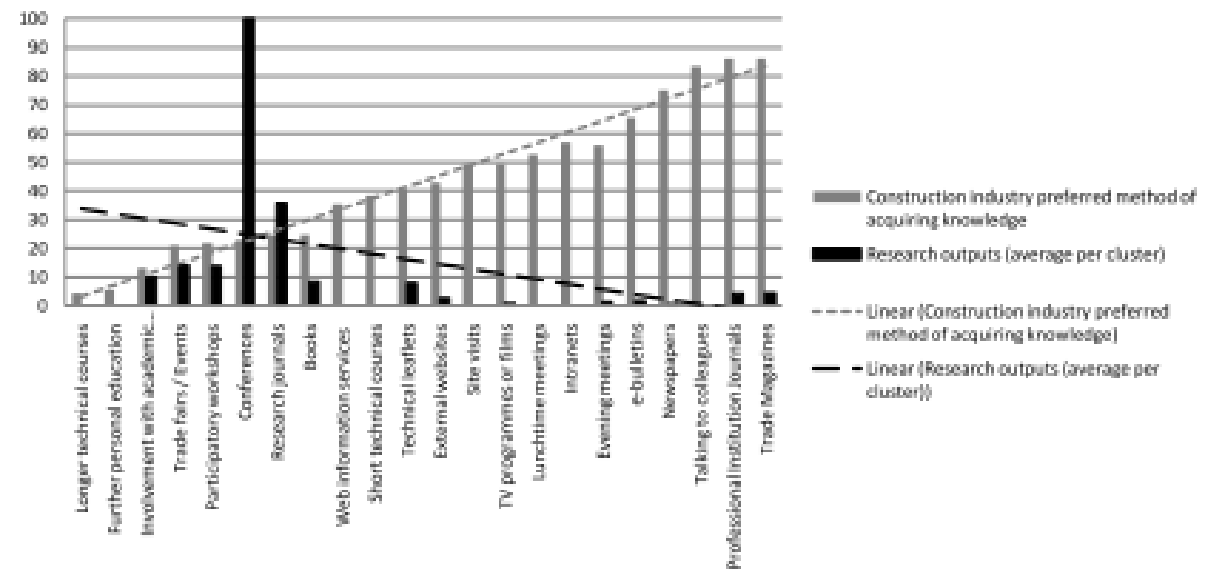
- Knowledge Push and Pull
- General Diffusion of Information
- Targeted Dissemination

PROGRAMME LEVEL KNOWLEDGE MANAGEMENT RESEARCH AND KNOWLEDGE CATEGORISATION



Aims	Not clearly defined	Adequately defined	Clearly defined
Targets	End users not identified	End users identified	End users fully engaged
Context	Not explained/implicit	Understood and explained	Well understood, explicit, and explained
Interaction with peers	Limited interaction	Regular interaction	Regular two way interaction
Interaction with potential users	Occasional lectures/ad hoc meetings	Provides/reviews research content	Full engagement with specialist community
Dissemination	Specialist journals	Not limited to journals	Wide range of media and events
Networks and Capacity Building	Informal support	Coordinated approach	Fully integrated

Figure 3: Comparison of dissemination practices by SUE consortia and knowledge access practices by construction industry practitioners



ISSUES PROJECT: KNOWLEDGE TRANSLATION AND DISSEMINATION



The ISSUES Project

SUE GATEWAY

SUE Search is your gateway to Research from the Sustainable Urban Environments research programme. Use the Search box below to look for information on all SUE related websites.

Google™ Custom Search Search

ISSUES People
ISSUES Work
Links
The SUE Programme

SUE BLOG

SUSTAINABLE URBAN ENVIRONMENTS

ADAPTIVE DEVELOPMENT

SUSTAINABLE URBAN ENVIRONMENTS

30

What's the link between SUE and the Big Society Capital?

The link between SUE and the Big Society Capital?



vidIOWiki join VidIOWiki or sign in

d) ISSUES' Professor Paul Jowitt explains...the importance of communicating your research findings quickly and concisely

Annabel Cooper
29 Jun 2010

Professor Paul Jowitt, from Knowledge Transfer project ISSUES, gives us his 'elevator pitch', explaining the importance of communicating your research findings quickly and concisely.

Categories: Knowledge Transfer

Supporting Materials

- ISSUES paper for ICMA conference, 'Bridging the Gap', December 2009
- EPSRC Project Magazine 'Any Time for Action?', June 2010
- ISSUES home page

vidIOWiki join VidIOWiki or sign in

e) ISSUES Steering Group member explains...What the ISSUES project means to me by Professor Chris Rogers

Annabel Cooper
05 Jul 2010

Categories: Knowledge Transfer

Supporting Materials

- ISSUES home page
- Urban Futures: part of the Sustainable Urban Environment research programme, led by Prof Rogers

vidIOWiki join VidIOWiki or sign in

c) ISSUES PhD student explains...How Knowledge Transfer fits the Research Cycle

Annabel Cooper
30 Aug 2010

Categories:

Supporting Materials

- ISSUES paper for IEMA conference, 'Bridging the Gap', December 2009
- ISSUES home page
- EPSRC: Sustainable Urban Environment programme
- B&F and Impact

ISSUES PROJECT: PROGRAMME LEVEL LINKING AGENT



**CREATING LINKS BETWEEN THE
KNOWLEDGE PRODUCERS**

**CREATING LINKS WITH
END-USER COMMUNITIES**

-Creation of Physical and Virtual
Platforms for Interaction

PROGRAMME LEVEL LINKING AGENT: CREATING PHYSICAL PLATFORMS



ISSUES PRESENTS 'BRAVE NEW CITY LONDON' AT THE INSTITUTION OF CIVIL ENGINEERS



The 'Brave New City' event brought together representatives from across the policy and research sectors to discuss the challenges to creating a sustainable future.

Pitting the wits of (London) Mayor's Advisor, Paul Morrel, against the Principal Investigator of the 'Brave New City' project, the debate was chaired by the Institution of Civil Engineers.

The expert panel was supported by policy makers from the Institution of Civil Engineers and partners from the EPSRC funded 'Brave New City' project.



ISSUES BRAVE NEW CITY EDINBURGH EVENT CAUSES A STIR

ISSUES Brave New City event last month brought together representatives from across the urban design, building, architecture, research and environment sectors, using film clips from ITN Source to spark off a debate around the future of Scottish cities.

The tough-talking panellists and audience members discussed:

- the failure of simplistic land use and building systems driven by profit and hyper-efficiency
- the crippling absence of 'placemaking' in city building and design
- the 'five minute pint' city
- the threat of mass migration caused by climate change
- the renewable energy industry as major future employer



PROGRAMME LEVEL LINKING AGENT: CREATING VIRTUAL PLATFORMS



The ISSUES Project E-Bulletin
Implementation Strategies for SUE Systems
July 2010

Dear SUE

The ISSUES Project E-Bulletin
Implementation Strategies for SUE Systems
June 2010

Dear SUE PIs and Researchers

The ISSUES Project E-Bulletin
Implementation Strategies for SUE Systems
November 2009

Dear SUE PIs and Researchers,

Thank you for your contribution to the SUE Consortium's work in this area. We are pleased to see that you are all working together to develop a shared vision for the SUE programme.

Current RESOURCES [View all SUE webinars](#)

The most recent SUE Success Stories that highlight instances where the SUE consortium has successfully implemented its work in your area are the **2009 SUE Success Stories**.

The latest SUE Success Story from the SUE Consortium **WAMP SUE**
**WAMP SUE: A METROLOGICAL NETWORKING AND MONITORING ACCESSIBILITY
INTEGRATION PLATFORM METRIC DATA REQUIREMENTS INVESTIGATION AND ANALYSIS**
Read the Success Story here: http://www.sue.ac.uk/wordpress/wp-content/uploads/2010/06/WAMP_SUE.pdf

connect

Home Profile Subjects Events

Sustainable Urban Environment (SUE)
Member Group

Welcome to SUE

The Sustainable Urban Environment (SUE) programme is a £2 million portfolio of research funding to support sustainability in our urban environments.

SUE is made up of 10 interdisciplinary consortia that investigate all aspects of sustainability. These include urban water management, transport planning and strategy, waste planning, regeneration and sustainable engagement.

Recent updates:

- My 1st session on 28 December
- My 2nd session on 11 December
- My 3rd session on 28 December
- My 4th session on 24 October
- My 5th session on 18 October

All Activities:

- My 1st session on 28 December
- My 2nd session on 11 December
- My 3rd session on 28 December
- My 4th session on 24 October
- My 5th session on 18 October

The ISSUES Project

HERIOT WATT UNIVERSITY OF CAMBRIDGE EPSRC

ISSUES People

Andy Moffat	Angela Druckman	Angela Hull	Anil Namdeo	Chris Rogers	David Butler
Eckart Lange	Glenn Lyons	Graeme Evans	Joe Doak	John Barton	John Forrester
Keith Jones	Malcolm Horner	Malcolm Eames	Marcial Echenique	Mike Kagloglou	Mike MacDonald
Neil Paulley	Nicola Dempsey	Paul Jowitt	Rachel Cooper	Roger Mackett	
Steve Shaw	Tadj Oreszczyn	Tim Dixon			

ISSUES Work

Links

Contact Us

ators and ch
:
: experts
: associate
: d the exp

ISSUES PROJECT: PROGRAMME LEVEL CAPACITY BUILDING



**PROMOTING A CULTURE OF
KNOWLEDGE TRANSFER AMONGST
RESEARCHERS**

**KNOWLEDGE TRANSFER GUIDANCE
FOR RESEARCHERS**

- Workshops
- Guidebook

**KNOWLEDGE TRANSFER GUIDANCE
FOR FUNDERS AND END USERS**

ISSUES PROJECT: PROGRAMME LEVEL CAPACITY BUILDING



KNOWLEDGE EXCHANGE GUIDEBOOK FOR RESEARCHERS

KNOWLEDGE EXCHANGE WORKSHOPS FOR RESEARCHERS

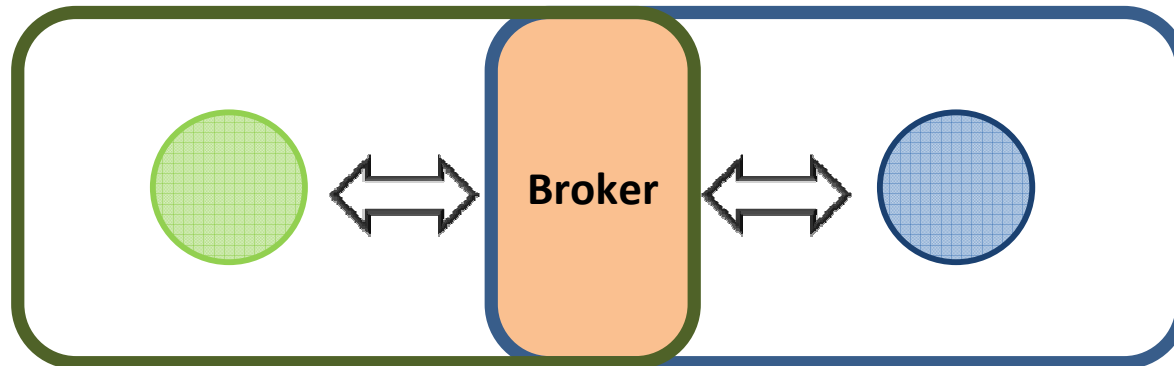


SUE SUCCESS STORIES



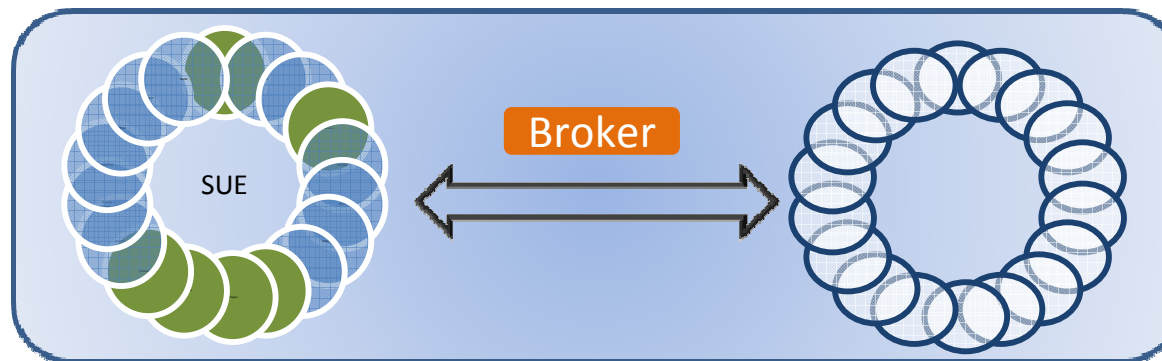
	Knowledge Brokering Activity	Knowledge managing	Linking	Capacity building
ISSUES Activity				
Information portal/search engine (SUE Gateway)		X	X	
Web directory of expertise (SUE Gallery of Experts)		X	X	
Online video portal (SUE Explains Vidiowiki)		X		X
Events (Ebbsfleet Challenge, Brave New City, etc.)			X	X
Movie poster tour		X		
Issues research based publications and reports		X		X
Feature articles about SUE in trade media		X	X	
Summarising research portfolios into plain language		X	X	
Newsletters, postcards, events		X	X	
SUE Exchange meetings for researchers			X	X
KTN network 'connect' platform			X	
Advocacy meetings		X	X	X
KT Guidebook for Researchers				X
Impact training for Researchers				X

MODELS OF KNOWLEDGE BROKERING



ONE-TO-ONE

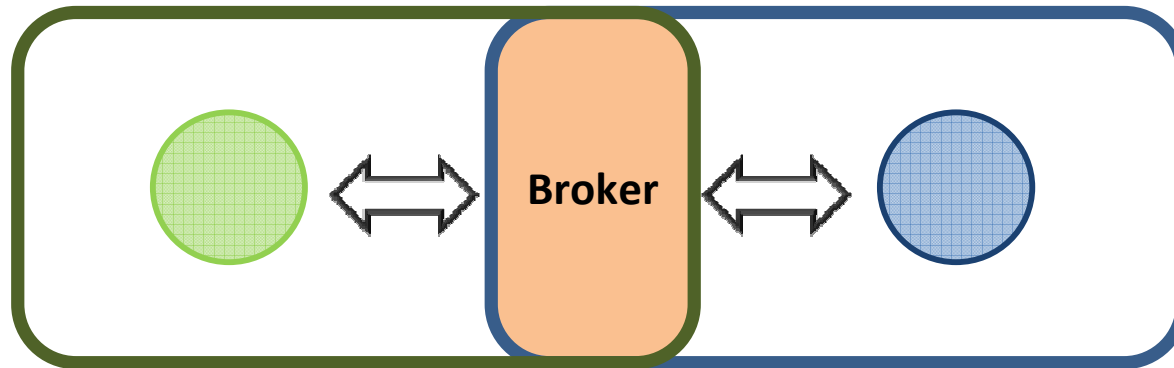
Knowledge brokering



MANY-TO-MANY

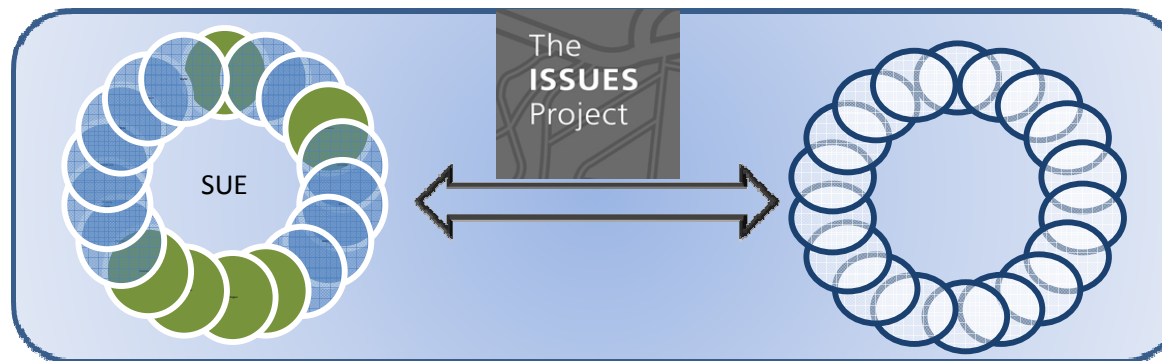
Knowledge brokering

MODELS OF KNOWLEDGE BROKERING



ONE-TO-ONE

Knowledge brokering



MANY-TO-MANY
Knowledge brokering



PPROGRAM LEVE L
Knowledge brokering

BENEFITS OF MANY-TO-MANY KNOWLEDGE BROKERING



- OFFERS A NEW APPROACH TO KT ON THE RESEARCH PROGRAMME LEVEL
- EXTENDS TRADITIONAL ONE-WAY DISSEMINATION
 - IMPROVING KNOWLEDGE PUSH AND STIMULATING KNOWLEDGE PULL
- FOSTERS INTERNAL AND EXTERNAL PROGRAMME IDENTITY
- ENCOURAGES CROSS DISCIPLINARY & CROSS SECTORAL WORKING
- HAS POTENTIAL TO GENERATE ONE-TO-ONE RELATIONSHIPS

CHALLENGES TO MANY-TO-MANY KNOWLEDGE BROKERING



- MULTIPLICITY OF RESEARCH GENERATED AND ITS POTENTIAL USERS
- BROKER DETACHMENT FROM THE RESEARCH
 - LACK OF CAPACITY TO SUPPORT ONE-TO-ONE RELATIONSHIPS THAT MAY HAVE DEVELOPED FROM THE MANY-TO-MANY APPROACH
- BROKER'S LEGITIMACY FOR THE RESEARCH PROGRAMME AND THE END USER COMMUNITIES
- DIFFICULTY OF MEASURING IMPACTS

REFERENCES



- MEYER, M (2010), 'THE RISE OF THE KNOWLEDGE BROKER', *SCIENCE COMMUNICATION*, 32 (1), 118-27.
- BIELAK, A.T, ET AL. (2008), 'FROM SCIENCE COMMUNICATION TO KNOWLEDGE BROKERING: THE SHIFT FROM 'SCIENCE PUSH' TO 'POLICY PULL'', IN DONGHONG CHENG (ED.), *COMMUNICATING SCIENCE IN SOCIAL CONTEXTS* (NEW YORK: SPRINGER), 201-26.
- MONCASTER, A, ET AL. (2009), 'THE BIG ISSUE: KNOWLEDGE EXCHANGE PRACTICES BETWEEN ACADEMIA AND INDUSTRY', *ENGINEERING SUSTAINABILITY* 163 (3), 167-74.
- CRISHNA, N, ET AL. (2010), 'BRIDGING THE GAP - UNDERSTANDING THE BARRIERS TO THE EXCHANGE OF KNOWLEDGE BETWEEN URBAN SUSTAINABILITY RESEARCH AND PRACTICE', *THE ENVIRONMENTALIST*, (106), 14-18
- ISSUES PROJECT WWW.URBANSUSTAINABILITYEXCHANGE.ORG.UK
- SUE GATEWAY WWW.URBANSUSTAINABILITYEXCHANGE.ORG.UK/ISSUESUEGATEWAY
- SUE EXPLAINS VIDIOWIKI [HTTP://VIDIOWIKI.COM/FEATURE/LIST/JQEM67T/](http://VIDIOWIKI.COM/FEATURE/LIST/JQEM67T/)
- E-CONNECT [HTTPS://KTN.INNOVATEUK.ORG/WEB/SUSTAINABLE-URBAN-ENVIRONMENT-SUE](https://KTN.INNOVATEUK.ORG/WEB/SUSTAINABLE-URBAN-ENVIRONMENT-SUE)
- GALLERY OF EXPERTS
WWW.URBANSUSTAINABILITYEXCHANGE.ORG.UK/ISSUESGALLERYOFEXPERTS

ACKNOWLEDGMENTS



PAPER CO-AUTHORS:

KATHERINE BECKMANN

KIMBERLEY PRATT

ANNABEL COOPER

NAEEDA CRISHNA

PROF. PAUL JOWITT



THANK YOU

E: KEP3@HW.AC.UK

T: 0131 451 8146